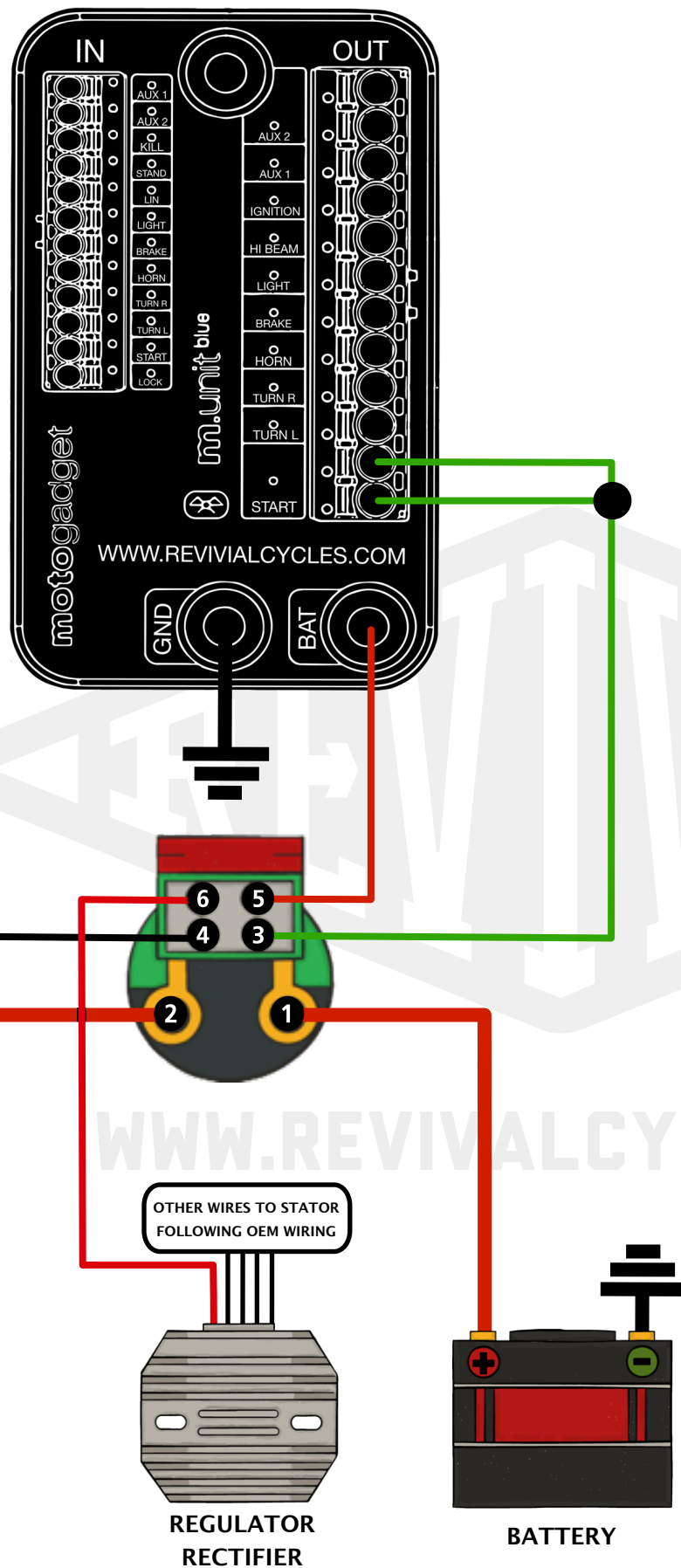
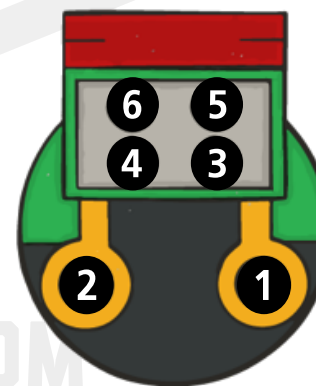
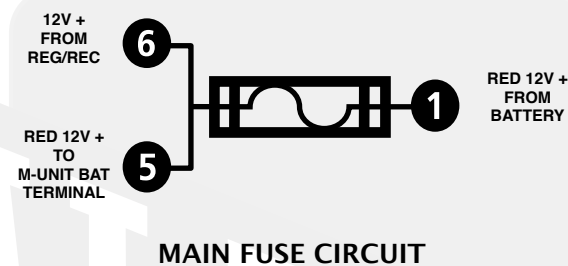
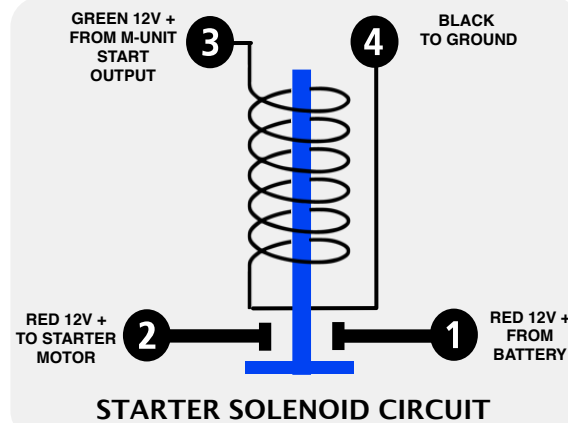


1



2

FUNCTIONS AND TERMINAL ASSIGNMENTS



- 1 RED 12V+ FROM BATTERY - 6 AWG WIRE
- 2 RED 12V+ TO STARTER MOTOR - 6 AWG WIRE
- 3 GREEN 12V+ FROM M-UNIT START OUTPUT  
\* or starter relay for non m-Unit install
- 4 BLACK TO GROUND
- 5 RED 12V+ TO M-UNIT BAT TERMINAL  
\* or + terminal at key switch for non m-Unit install
- 6 12V+ FROM REGULATOR / RECTIFIER



WWW.REVIVALCYCLES.COM  
UNIVERSAL STARTER SOLENOID WITH MAIN FUSE WIRING DIAGRAM

This starter solenoid will work on most\*\* Motorcycles and is ideal for m-Unit installations.

Two separate functions, starter solenoid and main fuse are consolidated in one component making for a cleaner, more organized wiring harness.

• Diagram 1 provides guidelines for installations using the m-Unit Blue or Basic Models.

-For installation with the older V.2 The green wire will go to the AUX out.

-For non m-Unit installs refer to diagram 2 (\*)'s for correct terminal assignments.

• Diagram 2 provides schematics for understanding the two functions and terminal assignments.

\*\* Some motorcycles have solenoids integrated with the starter motor. This is most common found on Harley Davidson, BMW and Moto Guzzi and in these cases this solenoid is not used.

\*\*\* If using Revival's Deluxe m-Unit Wiring Kit the fuse terminal in this component replaces the fuse terminal included with the wire kit.

Kit includes:

- 1X starter relay
- 2X mounting tabs
- 1X connector
- 6X terminals
- 5X wire seals
- 2X 20 amp Fuses

WIRE GAUGE AMPERAGE QUICK REFERENCE	
AWG	AMP
22	5
20	10
18	15
16	20
14	30
12	40
6	55