

Instruction Manual m-Blaze disc

Thank you for choosing a quality product from motogadget. All motogadget products are designed and manufactured in Germany.

Please read the following instructions carefully and follow them when mounting your turn indicator.

PLEASE USE THE M-BLAZE AS A FRONT TURN INDICATOR EXCLUSIVELY INSIDE THE EU. FOLLOW ALL MOUNTING INSTRUCTIONS. DISCONNECT THE BATTERY WHEN WORKING ON THE ELECTRICS OF YOUR VEHICLE. ALSO ENSURE SAFE AND SOUND STANDING OF YOUR VEHICLE WHILE MOUNTING.

PLEASE CONTRACT A PROFESSIONAL IF IN DOUBT ABOUT THE PROPER MOUNTING METHOD. THE ONLY WAY TO ENSURE THE DURABLE ATTACHMENT OF THE DEVICE IS TO MOUNT IT CORRECTLY. FAULTY MOUNTS MAY RESULT IN ACCIDENTS! BEFORE YOU START A TRIP, CHECK YOUR TURN INDICATOR FOR A TIGHT FIT. RE-FASTEN AND REPOSITION THE TURN INDICATOR AS NECESSARY.

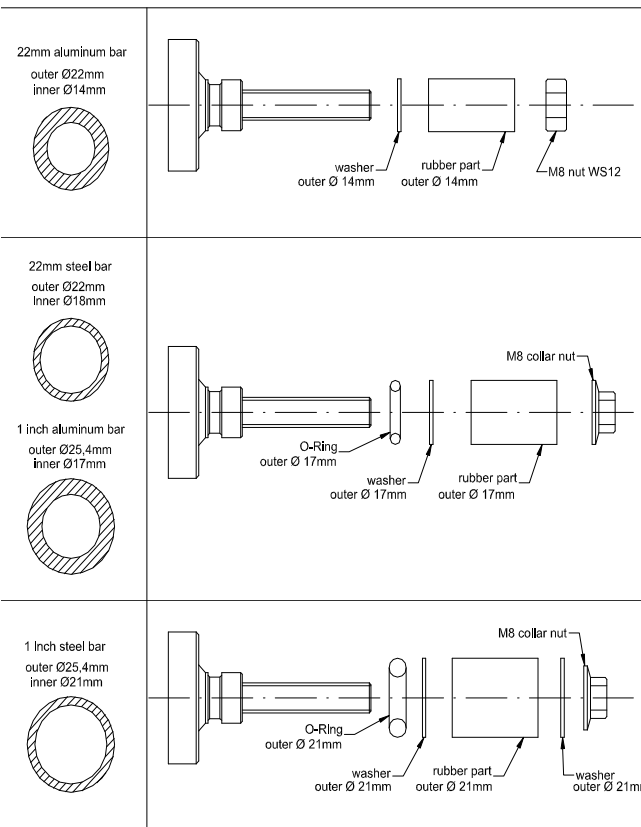
THIS PRODUCT IS INTENDED TO BE USED AS MOTORCYCLE TURN INDICATOR EXCLUSIVELY.

THE CASING MAY NOT BE OPENED OR MANIPULATED. IN CASE OF MECHANICAL DAMAGES ALL WARRANTY IS VOIDED. IF THE DEVICE IS USED FOR OTHER PURPOSES THAN THOSE INTENDED, ALL WARRANTIES WILL BECOME VOID. MOTOGADGET ACCEPTS NO LIABILITY FOR DIRECT OR INDIRECT DAMAGES OF ANY KIND RESULTING FROM USAGE, INSTALLATION OR CONNECTION OF THE PRODUCT AND ITS ACCESSORIES. THESE ARE, AMONG OTHERS, DAMAGES TO PERSONS, GOODS AND FINANCIAL ASSETS.

CAUTION! TURN SIGNAL HOUSING BECOME HOT DURING OPERATION. USE TURN SIGNAL WHILE ATTACHED TO A HANDLEBAR AND OPERATED BY A FLASHER RELAY. IT IS NOT PERMITTED TO SWITCH TURN SIGNAL CONTINUOUS ON.

Choosing Mounting Hardware

The m-Blaze disc is suited for mounting on handle bars with 14-21 mm inner diameter. Please choose the right mounting hardware according to the schematic below.



Mounting

The m-Blaze disc must be mounted horizontally at a handle bar angle in a range from 0° to max. 9°.

Please clean the inner diameter of the handle bar before beginning mounting work. Only a clean and grease-free surface ensures a secure mount of your turn indicator.

Drill a 3 mm hole for the cable outlet into the bottom of the centre of your handlebar. Alternatively you can drill one hole each on the left and right hand side, next to the gear switch instruments. These holes must be deburred meticulously on both in- and outside.

The connector cables should not be exposed to tension or pull. This might rip the cable free from the turn indicator casing or subject it to fraying at the cable outlet. Make sure to keep enough slack for turning the handlebar, keep in mind the individual steering angle of your motorbike. We recommend protecting the cable by shrink-on tube at the outlet.

DAMAGE TO THE CABLE INSULATION MAY RESULT IN SHORT CIRCUITS, CABLE FIRES AND DANGER OF LIFE.

Use the "L"-marked turn indicator for the left hand side of the handle and the one marked with "R" for the right hand side.

Insert the connector cables into the handlebar tube and route it to the outside through the 3 mm drilled opening. Use a stiff piece of wire as a probe to help you in the process.

Slightly tighten the M8 nut at the turn indicator to spread the rubber part.

Maintain rubber-to-tube contact while inserting the turn indicator into the handlebar tube. Further spread the rubber part inside the handlebar tube by manually turning your turn indicator clockwise (do not use any tool!).

Turn the turn indicator until considerable force has to be applied to keep it turning. When finished, the motogadget logo has to face upwards.

If the rubber part inside the handlebar does not spread: Pull out the turn indicator, bring the connector cable to its initial position by rotating the turn indicator counter-clockwise, increase pre-stress of the rubber by tightening the M8 nut and repeat the mounting process.

TWISTING THE CONNECTOR CABLE REPEATEDLY MAY RESULT IN DAMAGES. DO NOT ATTEMPT TO TWIST THE CABLE STRONGER THAN FOUR ROTATIONS INTO ONE DIRECTION DURING ONE ATTEMPT. IF APPLICABLE, DISCONTINUE YOUR ATTEMPT AND APPLY MORE PRE-STRESS TO THE RUBBER PART. RELAX THE CABLE BY TWISTING IT BACK ACCORDINGLY BEFORE YOUR NEXT MOUNTING

Connecting and operation

Connect the left turn indicator red connector cable to the positive cable of the left turn indicator circuit and the right side turn indicator red cable to the positive cable of the right turn indicator circuit. Connect both black connector cables to the vehicle ground. Please use the included crimp connectors for this purpose. Test your turn indicators for proper operation. If the flashing frequency has changed, you need an electronic, load-independent flasher relay (e. g. m-Flash motogadget order No. 4000010).

THE TURN INDICATOR IS MOUNTED PROPERLY AND CORRESPONDS TO REGULATION IF IT HAS BEEN MOUNTED WITH THE "L"-MARKING (FOR "LEFT SIDE") AND THE "R"-MARKING (FOR "RIGHT SIDE") ON THEIR RESPECTIVE SIDES, WHILE KEEPING THE MOTOGADGET LOGO ON BOTH SIDES VISIBLE WHEN VIEWED FROM TOP.

The motogadget team wishes you a pleasant ride and fun with your new turn indicators.